



ITT

BRSES

Goulds Pumps

Sump, Effluent
and Sewage Pumps
and Accessories



Engineered for life

SUMP PUMPS

Pump Specifications

Vertical or Submersible Sump and Utility / Drainage Pumps

Models

ST, CVP, SP, LSP, 1DW, 2DW, STS

Materials of Construction

Cast Iron • Engineered Composites • Stainless Steel

Performance Range

- Up To 110 GPM • 1/4 - 1 1/2 HP • Single Phase and Three Phase • Maximum Head 66'
- Solids Up To 3/8" • Discharge Size: 1 1/4" - 1 1/2" NPT and 2" Hose

Features and Benefits

- Automatic and Manual Models Available
- Motors Rated For Continuous Duty



Tested to UL778 and CSA 22.2 108 Standards
By Canadian Standards Association



SUBMERSIBLE EFFLUENT PUMPS

Pump Specifications

Submersible Effluent Pumps For Liquids Containing Solids Up To 3/4"

Models

EP, WE, PE, SE, 1SC

Materials of Construction

Cast Iron • Engineered Composites • Stainless Steel

Performance Range

- Up To 140 GPM • 1/3 - 2 HP • Single and Three Phase
- Maximum Head 240' • Solids Up To 3/4" • Discharge Size: 1 1/2" - 2" NPT

Features and Benefits

- Silicon Carbide Mechanical Seal Faces Standard On WE Models
- Motors Rated For Continuous Duty



Tested to UL778 and CSA 22.2 108 Standards
By Canadian Standards Association

SUBMERSIBLE SEWAGE PUMPS

Pump Specifications

Submersible Sewage Pumps For Liquids Containing 2" To 3" Solids

Models

PS, WW05, PV, 1DM/2DM, 1DV/2DV, WS__B, WS__BF, WS__BHF, WS__D3, WS__D4

Materials of Construction

Cast Iron • Engineered Composites • Stainless Steel

Performance Range

- Up To 600 GPM • 1/3 - 7 1/2 HP
- Single Phase and Three Phase • Maximum Head To 82'
- Solids Up To 3" • Discharge Size: 2" and 3" NPT and 3" and 4" Flanged

Features and Benefits

- Silicon Carbide Mechanical Seal Faces Standard on WS__B, WS__BF, WS__BHF, WS__D3, WS__D4 Models
- Motors Rated For Continuous Duty



Tested to UL778 and CSA 22.2 108 Standards
By Canadian Standards Association



PRECONFIGURED PACKAGES

Specifications

Packaged Systems For Ease of Installation

Models

GPGS, GWP, 2" - 4" Preconfigured Package Systems

Materials of Construction

- Fiberglass and Poly Basins
- GWP Series features a ribbed polyethylene basin with structural foam cover
- New S20B, D20B simplex and duplex fully piped with guiderails for 2" pumps

Features and Benefits

- Completely Assembled for One Stop Shopping
- Systems Available with 1 1/4" - 4" Piping

Contact Your Goulds Pumps Distributor For All Your Custom Basin Requirements.



SUBMERSIBLE GRINDER PUMPS

Pump Specifications

Submersible Grinder Pump For Pressurized Sewage Systems

Models

RGS

Materials of Construction

Cast Iron • Silicon Bronze • Stainless Steel

Performance Range

- Up to 40 GPM • 2 HP • Single Phase, 208/230 Volt • Maximum Head 95'
- Solids Up To 3" • Discharge Size: 1 1/4" NPT

Features and Benefits

- Silicon Carbide Mechanical Seal Faces Standard
- Motor Rated For Continuous Duty
- Reversible Cutter Ring For Extended Life
- Cord with plug for direct connection to piggyback float switch



Tested to UL778 and CSA 22.2 108 Standards
By Canadian Standards Association



CENTRIPRO ACCESSORIES

Specifications

Full Line Of Pump and Control Accessories

Control Panels

- Stock Controls Feature the Most Popular Options
- Available In Simplex and Duplex Designs
- Goulds Can Custom Build A Control To Your Specification
- Many Panel Styles In Stock For Immediate Delivery

Float Switches

- Pump and Control Type
- Direct Connection For Up To 20 Amps

Piping And Accessories

- Check Valves
- Guide Rail Systems
- Pipe Fittings
- Junction Boxes

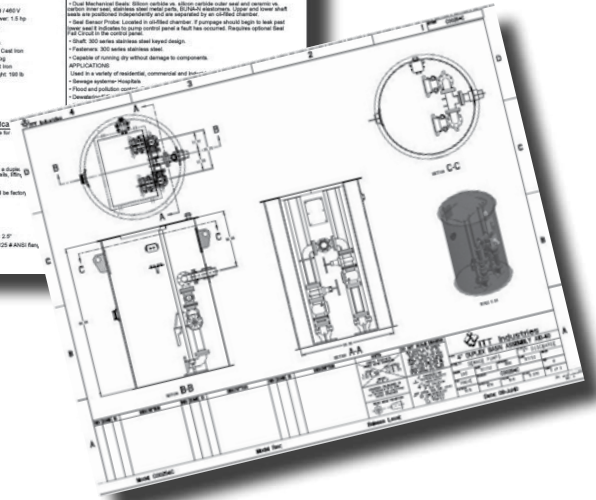
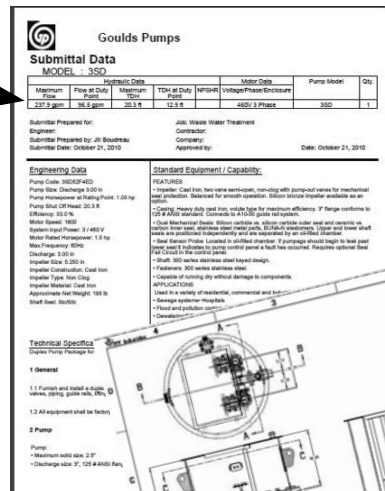
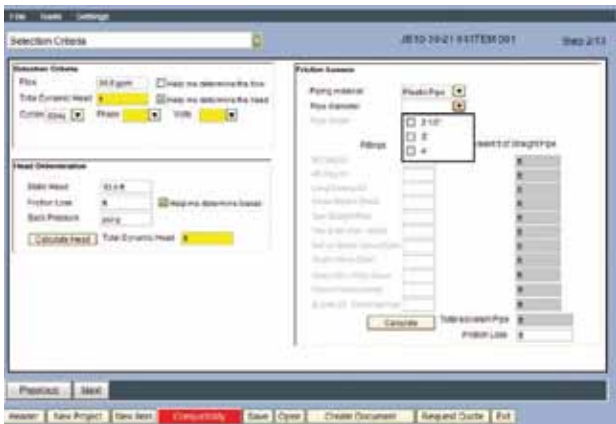
Contact Your Goulds Pumps Distributor For All Your Custom Control Requirements.





GOULDS PUMPS WASTEWATER SELECTION PROGRAM

- Web-based selection program
- Up-to-date information on:
 - Pump sizing
 - Package systems
 - Panel selections
- Includes rules to insure error-free selection
- Full submittal documentation
- One-stop selection for all your wastewater station needs



Available online at ecom.goulds.com.

For superior Customer Service, please contact the new 800 Hotline for technical assistance 866-673-0427. Applications Engineers will be awaiting your calls.



ITT
 2881 East Bayard Street
 Seneca Falls, NY 13148
 Phone: (866) 673-0427
 Fax: (315) 568-7973
www.goulds.com

