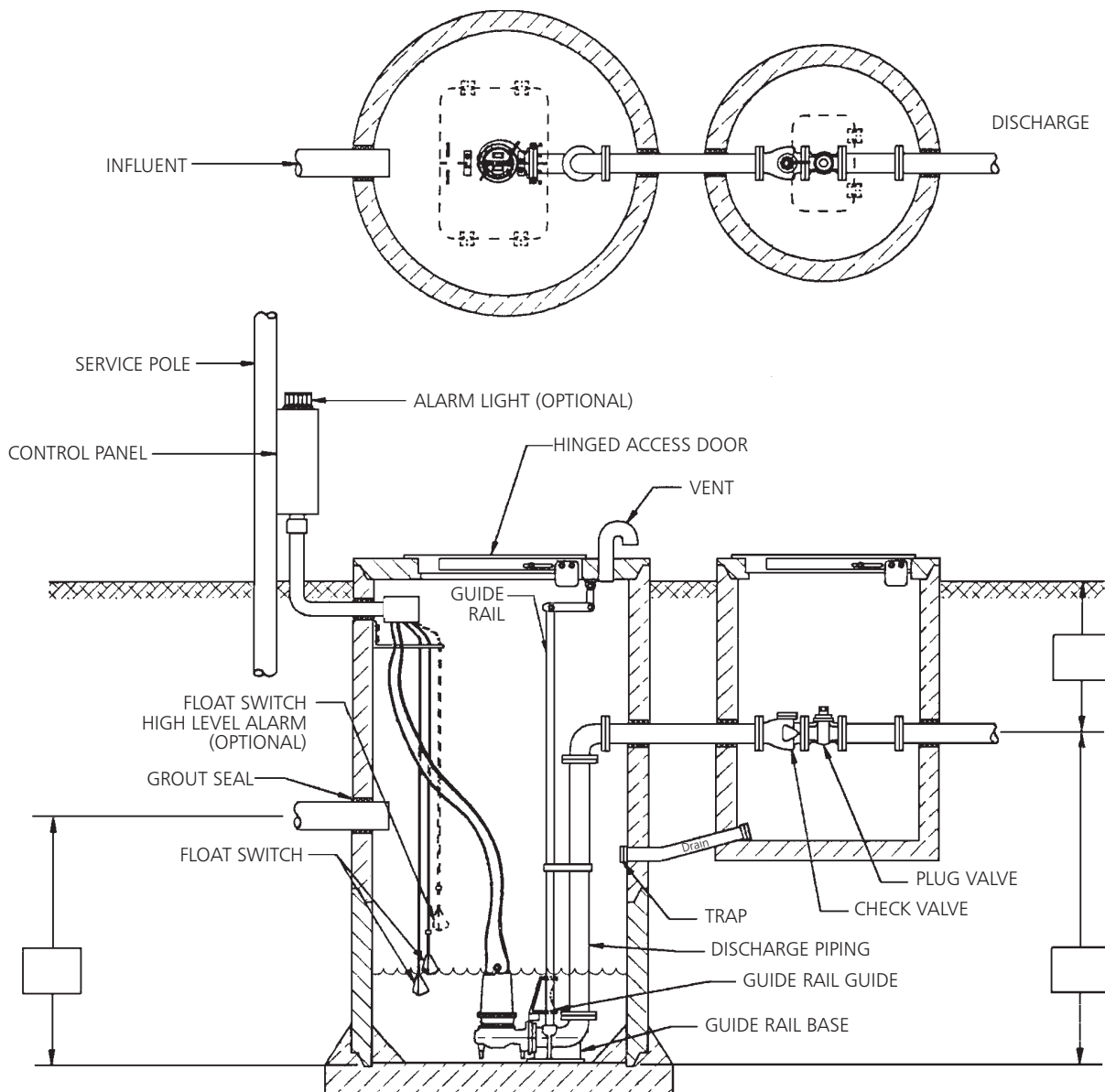


# TYPICAL INSTALLATION DRAWING – Simplex

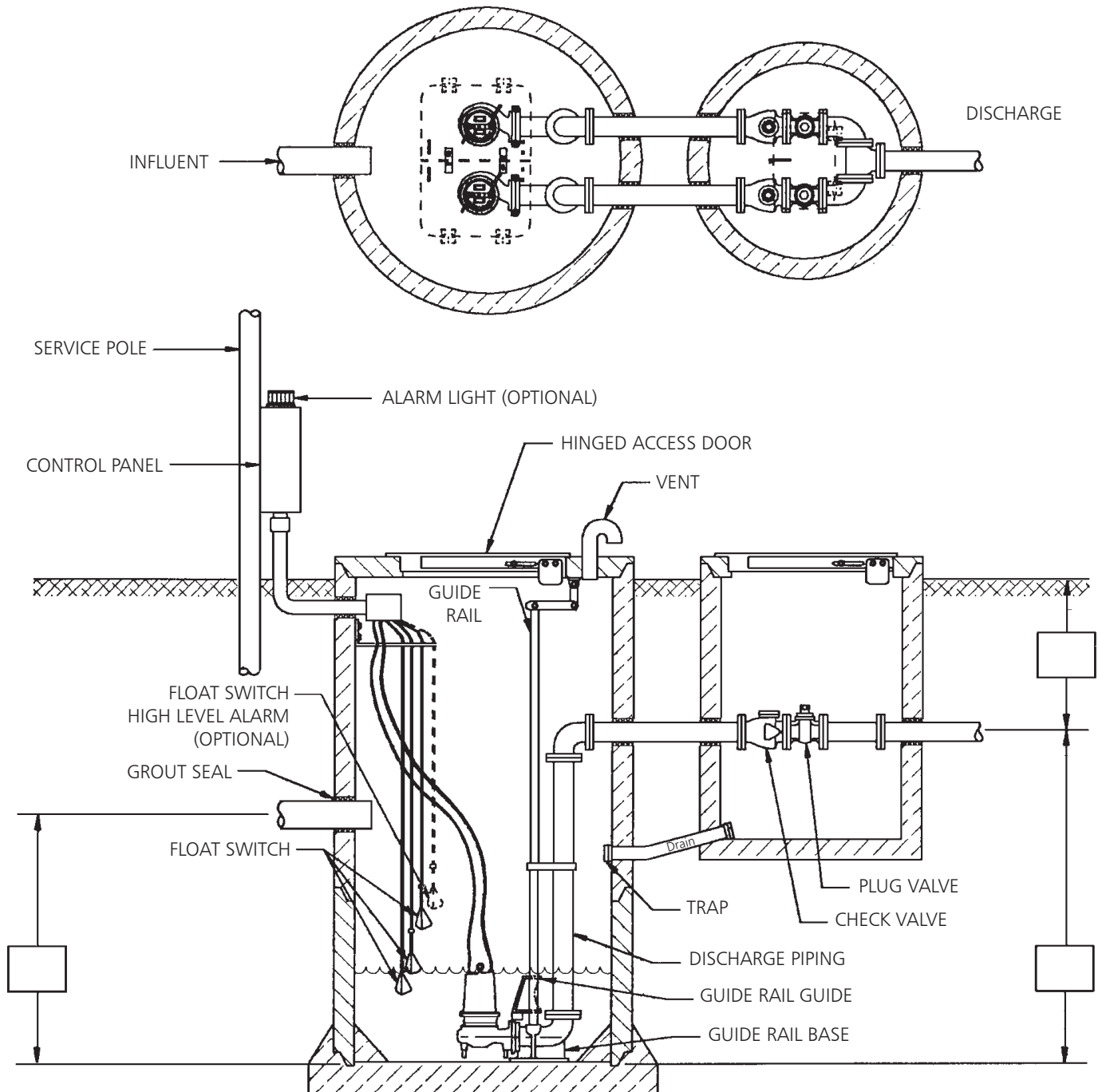
Submersible Sewage Pump – 3" and 4" NPT Discharge



(All dimensions are in inches. Do not use for construction purposes.)

### TYPICAL INSTALLATION DRAWING – Duplex

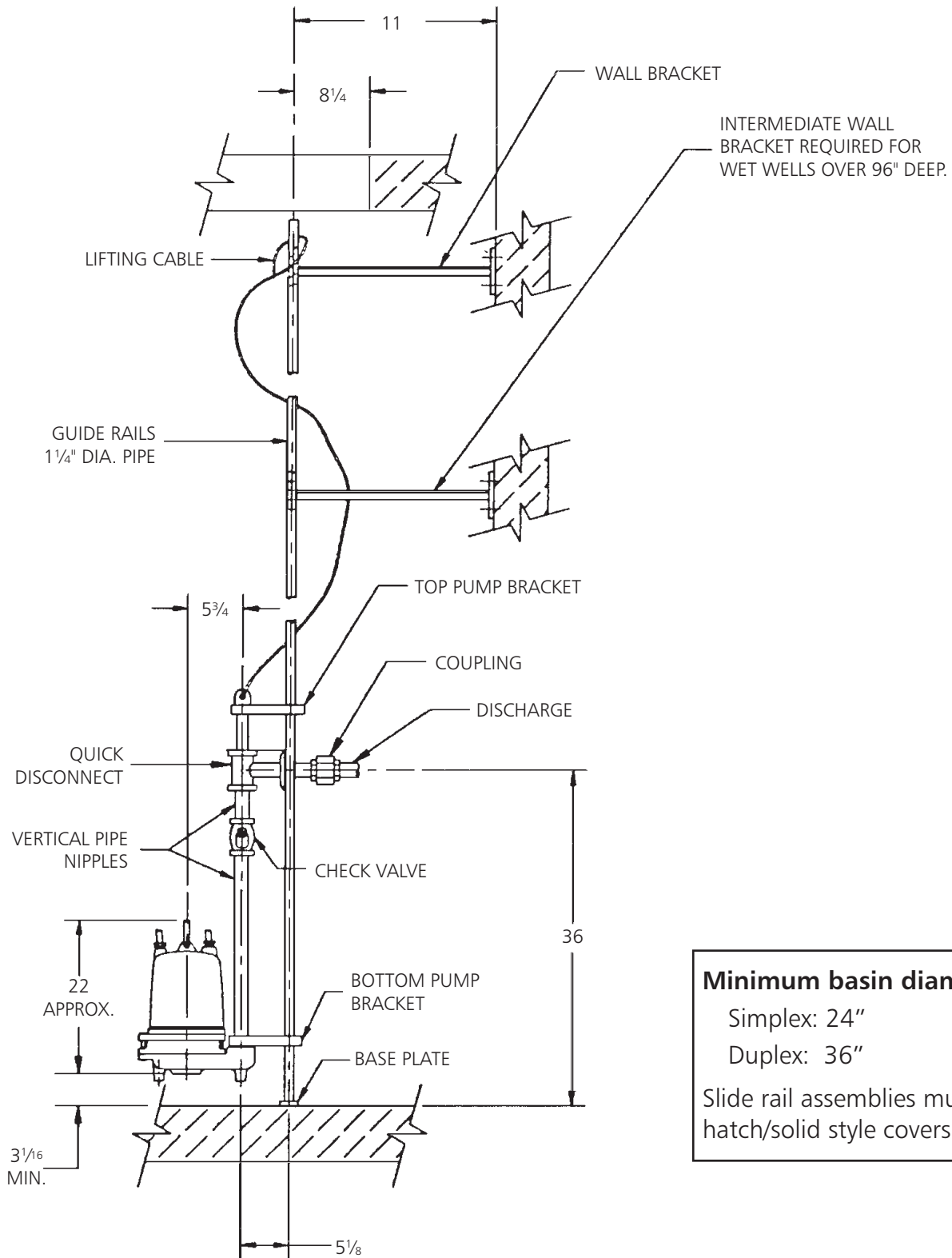
Submersible Sewage Pump – 3" and 4" NPT Discharge



(All dimensions are in inches. Do not use for construction purposes.)

### TYPICAL INSTALLATION DRAWING – 1GD

Submersible Grinder Pump – 1 1/4" Discharge Slide Rail (A10-12)



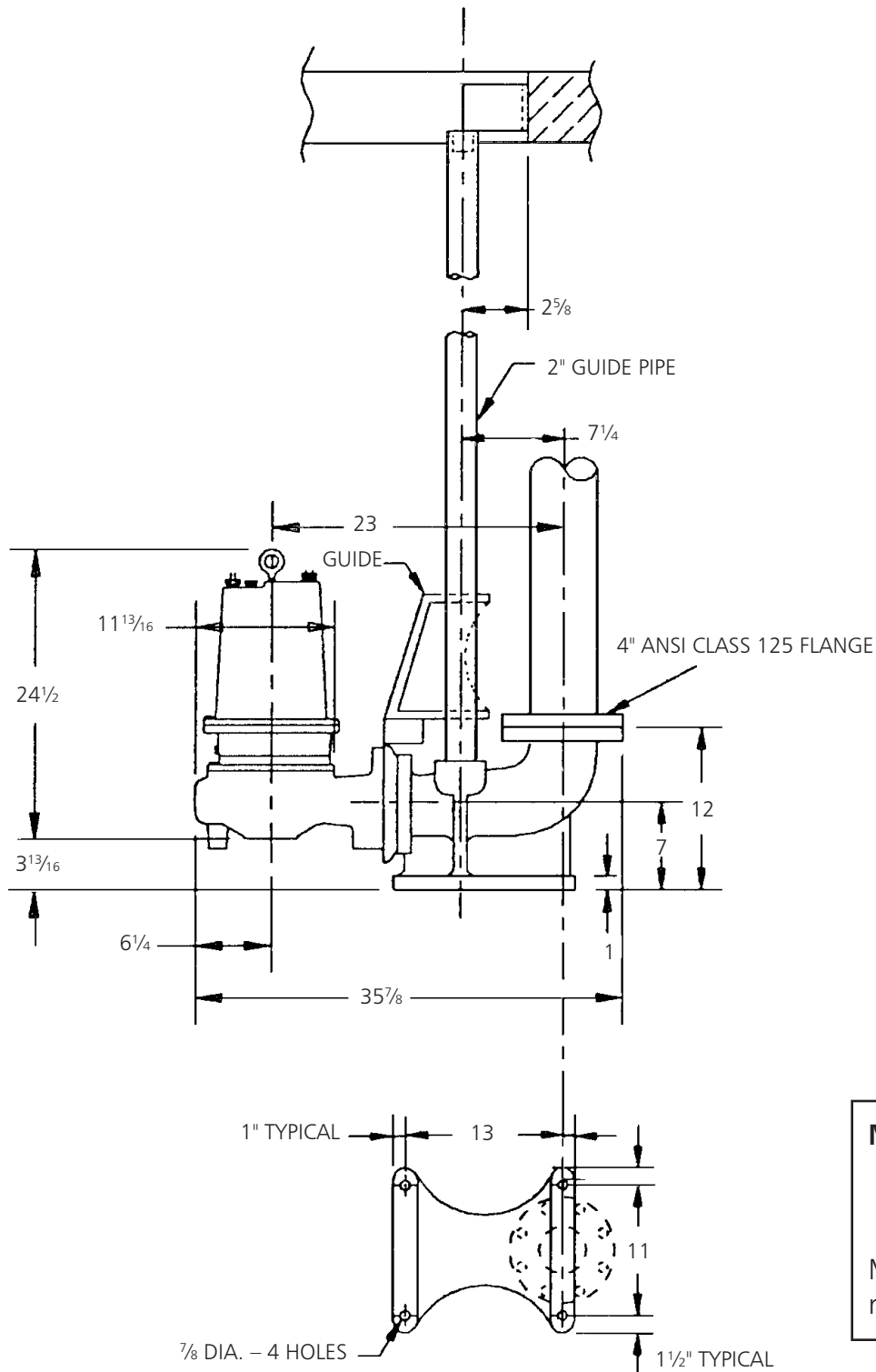
**Minimum basin diameters**  
 Simplex: 24"  
 Duplex: 36"  
 Slide rail assemblies must use hatch/solid style covers.

(All dimensions are in inches. Do not use for construction purposes.)  
 \*\*To use catalog 1 1/4" Duplex Discharge Piping.



## TYPICAL INSTALLATION DRAWING – 3888D4/4SD

Submersible Sewage Pump – with A10-40 Guide Rail



**Minimum basin diameters**

Simplex: 36"

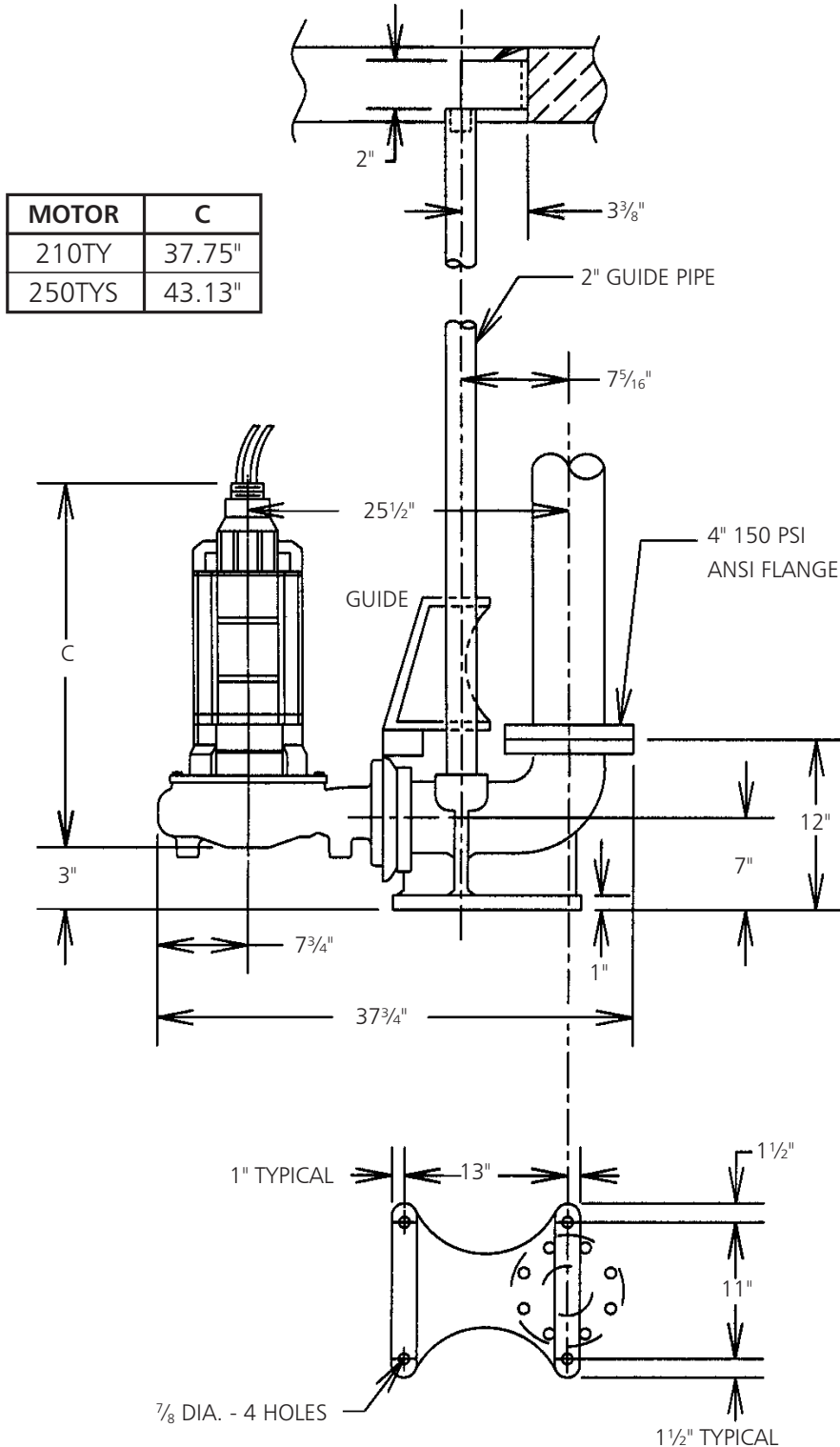
Duplex: 48"

Must use hatch cover to remove slide rail assemblies.

(All dimensions are in inches. Do not use for construction purposes.)

### TYPICAL INSTALLATION DRAWING – 4NS/4XD

Submersible Sewage Pump – on A10-40 Guide Rail

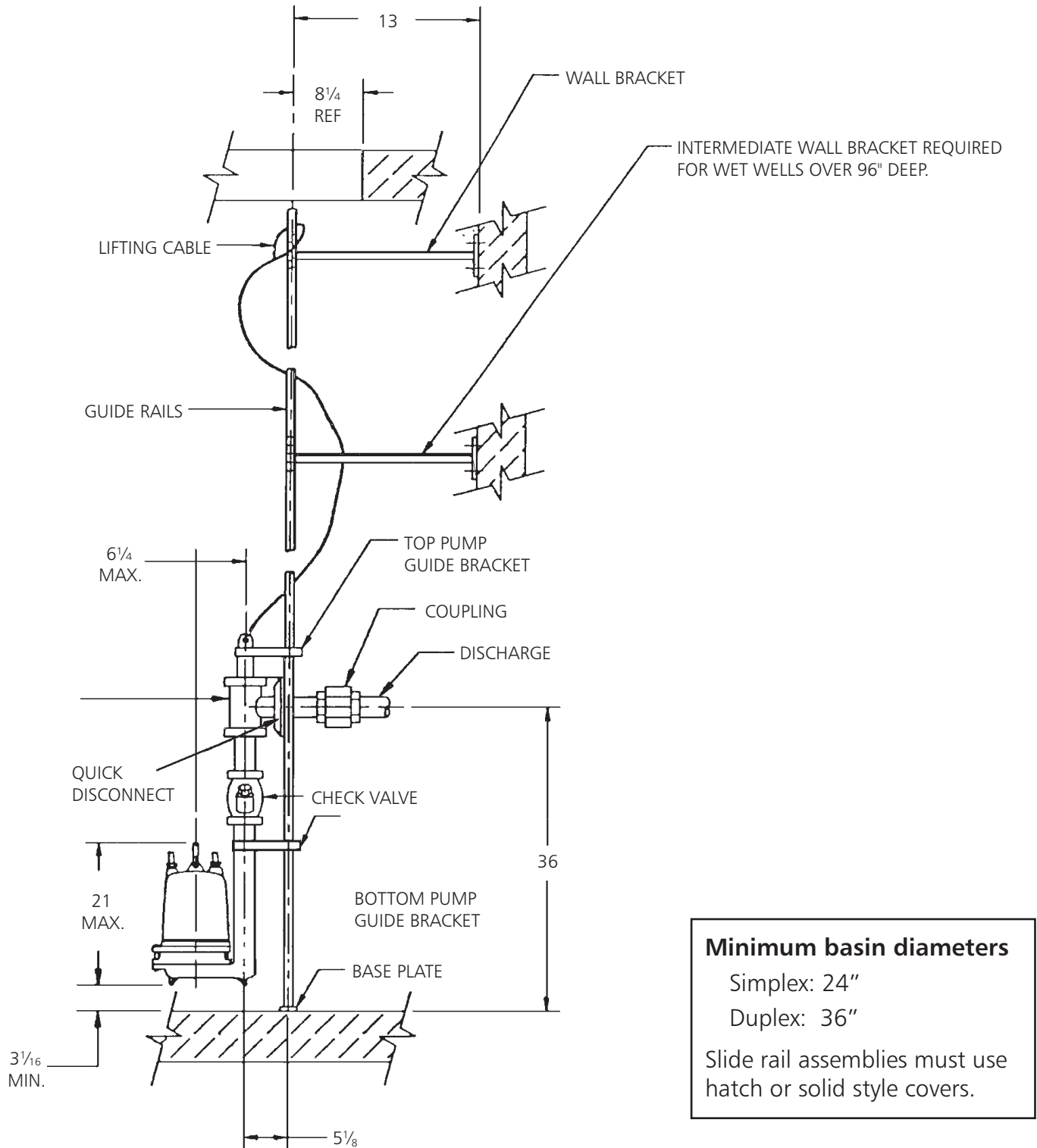


**Minimum basin diameters**  
 Simplex: 36"  
 Duplex: 48"  
 Slide rail assemblies must use hatch door style covers.

(All dimensions are in inches. Do not use for construction purposes.)

### TYPICAL INSTALLATION DRAWING – 2ED/2WD

Submersible Sewage Pump – (A10-20 slide rail)



(All dimensions are in inches. Do not use for construction purposes.)

\*\*To use Catalog 2" Duplex Discharge Piping



2881 East Bayard Street, Seneca Falls, NY 13148 • Phone: (315) 568-7123 • Fax: (315) 568-7973 • [www.goulds.com](http://www.goulds.com)

Goulds Pumps is a registered trademark of ITT Corporation.

ITT and the Engineered Blocks Symbol are registered trademarks of ITT Manufacturing Enterprises, Inc.

Copyright © 2011 ITT Corporation

TID

May, 2011

Printed in U.S.A.

SPECIFICATIONS ARE SUBJECT TO CHANGE WITHOUT NOTICE.