



# CentriPro® Accessories Product Line

# Contents

## PANELS

Custom Panels .....	3
Preconfigured Wastewater Panels .....	4
Specialty Panels .....	4
Alarms .....	5

## BASINS

Kits	
Unassembled/Assembled .....	6
Plumber Kits .....	6
Basins and Accessories	
Fiberglass Basins .....	7
Polyethylene Basins .....	7
Connections .....	8
Stainless Steel Float Brackets .....	9
Portable Hoists .....	9
Trash Baskets .....	9
Chains .....	9
Access Doors .....	9

## GUIDE RAILS

1 1/4", 1 1/2" and 2" Complete Rails .....	10
1 1/4" - 6" Guide Systems Less Rails .....	10
3" and 4" Base Elbows Less Rails .....	10

## FLOATS

Pump and Panel Switches	
Floats .....	11-12
Float Accessories .....	12

## FITTINGS

Check Valves/Fittings .....	13
-----------------------------	----

## OIL SMART

Elevator Sump Kit	
Oil Smart Switch .....	14

# Panels

## Panel Selection Breakdown

Series	Application	Style	Phase	Enclosure	Page
Build-Your-Own Custom "A" Series, "W" Series	Indoor/Outdoor	Simplex/Duplex	Single/Three	NEMA 1 NEMA 3R	3
Wastewater Disconnect Panel	Indoor/Outdoor	Simplex/Duplex	Single/Three	NEMA 1 NEMA 4X	3
Standard Wastewater Panel (SES Series)	Outdoor	Simplex	Single/Three	NEMA 4X	4
Explosion Proof Single Phase	Outdoor	Simplex/Duplex	Single	NEMA 4X	4
Panels with Single Phase Capacitors	Indoor/Outdoor	Simplex/Duplex	Single	NEMA 4X	4
Specialty Panels	Outdoor	Simplex/Duplex	Single/Three	NEMA 4X	4

## Custom Panels

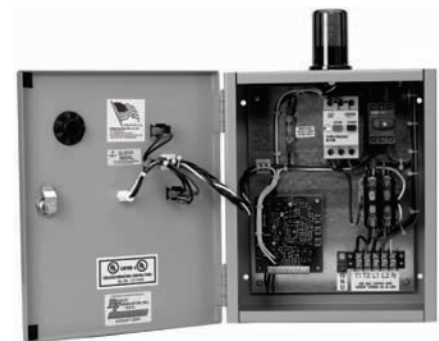
### Build-Your-Own Custom "A" and "W" Series

- Available in many enclosures.
- High level alarm circuit includes spring loaded silence switch for manual silence of alarm horn.
- Alarm test switch insures proper operation of the alarm circuit without the need to open the panel.
- Pump run light.
- Top mounted high intensity flashing red light provides 360° visibility.
- Pulsating, corrosion proof alarm horn.
- Many available options.
- UL Listed.



### Custom Wastewater Disconnect-Style Panels

- Oversize enclosure to accommodate all options.
- One main disconnect through-the-door with door interlock, prevents the door from accidentally being opened when the disconnect is in the ON position. Pad-lockable in the OFF position only.
- Oversize magnetic contactor.
- Overload protection.
- A manual lockable disconnect feature on the motor overload protector. Lock not provided.
- Control transformer with fused primary and fused secondary on all three-phase. Single-phase 115 Volt has a fused control circuit.
- Pump test switch. Three-position HOA (hand-off-automatic).



# Preconfigured Wastewater Panels

## Standard Wastewater Panel (SES Series)

- Available in NEMA 1 and NEMA 4X depending on Amp draw
- Hinged door with lockable stainless steel latch for safe operation indoors and out.
- High level alarm circuit with external, on/off, alarm horn silence switch.
- Alarm light and alarm horn.



## Explosion-Proof Intrinsically Safe Single Phase Panels

- NEMA 4X fiberglass enclosure.
- Pump circuit breaker(s).
- Control circuit breaker.
- Motor starter(s) with overload(s).
- H-O-A switch(es).
- Pump run light(s).
- Seal fail circuit(s) with signal light.
- High temperature pump shutdown circuit(s).
- Start capacitor(s) and run capacitor(s).
- Starting relay.
- Alarm light/horn.
- Intrinsically safe, simplex have 3 relays and duplex panels contain 4 relays. One relay is required per float switch.
- UL Listed.

## Single Phase Panels for 15/20GDS and 1/GA MK/MV/GV

- NEMA 4X fiberglass enclosure.
- Pump circuit breaker(s).
- Motor contactor(s).
- H-O-A switch(es) (hand-off-automatic switch).
- Pump run light(s) through door.
- External motor components (capacitors).
- High level alarm circuit with dry contacts.
- Alarm light / alarm horn.
- Alternator.
- Specific panels also include MiniCas or seal fail and high temp.
- UL Listed.



# Specialty Panels

## Installer-Friendly Series / Floatless Panels

- Alarm power indicator - LED indicator for alarm.
- Alarm replace indicator - indicates alarm fuse blown.
- Float status LED - indicator on activation and float out of sequence alarm.
- Pump run indication.
- 7-segment LED display - high water, float status and sequence error, low level, standard dose count, power fail count, on/off pump count, runs, peak dose count.
- NEMA 4X.
- UL/CUL Listed.
- 3 - SJE MilliAmpMaster Floats - 20' cord included. Also available with level sensor for floatless operation.
- Time dose also available.



# Alarms

## Indoor and Outdoor Level Alarm Panels

Indoor and outdoor alarm panels for sump, effluent and wastewater systems, as well as cisterns and storage tanks.



### A4-2 (AB Alarm with Battery Backup)

- If primary power fails, the alarm system continues to work due to battery backup feature (battery not included).



### TAN1M (No Battery Backup)

- Float Switch Connection Terminal: For float switch connection only. Do not apply power. (Voltage across terminals is 12 VAC)
- Does not control or interface with pump.
- Operates even if pump circuit fails when wired on separate circuit.



### TAABP (ABP Alarm with Pump Receptacle)

- 120V receptacle on bottom to plug in pump power cord.
- Automatic alarm reset.
- Alarm float acts as redundant on float for pump.



### TAN3M (XT Alarm System)

- The Tank Alert® XT can be used as a high level alarm in lift chambers, sump pump basins and holding tanks.
- Enclosure meets Type 3R water-tight standards, listed for indoor or outdoor use under UL standard 864. Dimensions are 6.5" x 4.5" x 3.0".
- Premounted terminal block so enclosure can also be used as a junction box for splicing pump, pump switch and pump power. Meets NEC standard for junction boxes.



### TAABW (Alarm System - Standard Unit) TAABWUL (UL/CUL Listed Components)

- The Tank Alert® ABW and the Tank Alert ABW UL feature a battery operated, wireless transmitter that is placed in a tank up to 150' from the receiver/alarm.
- Easy to install, wireless liquid level alarm system with auto-reset, battery backup feature, add to existing systems without digging up lawns and landscaping.
- Red "alarm" light and green "power on" light, alarm "test" switch, and horn "silence" switch.
- Long life Lithium battery in transmitter (recommend replacement every 2 years).
- Loss of signal alarm. After 3 hours and 15 min. without a signal, an alarm sounds and the red light blinks.



### TAN4M (4X Alarm System)

- The Tank Alert® 4X can be used as a weatherproof high level alarm in lift chambers, sump pump basins and holding tanks.
- Stainless steel alarm horn.
- Dimensions are 6.4" x 5.3" x 5.0".

### Both the TANM and the TAN4M

- No power cord.
- Switches are rated for a maximum fluid temperature of 140° F (60° C).
- Does not control or interface with pump.
- Operates even if pump circuit fails when wired on separate circuit.



### LAN1 - Indoor LAN4 - Outdoor

- Both LAN 1 and LAN4 provide a warning of high liquid level conditions when used with a "normally open" (N.O.) float switch. Use a "normally closed" (N.C.) switch for low level warning.
- Alarm bell and light stay on until reset even if level goes down.
- Operates even if pump circuit fails when wired on separate circuit.

# Basin Packages

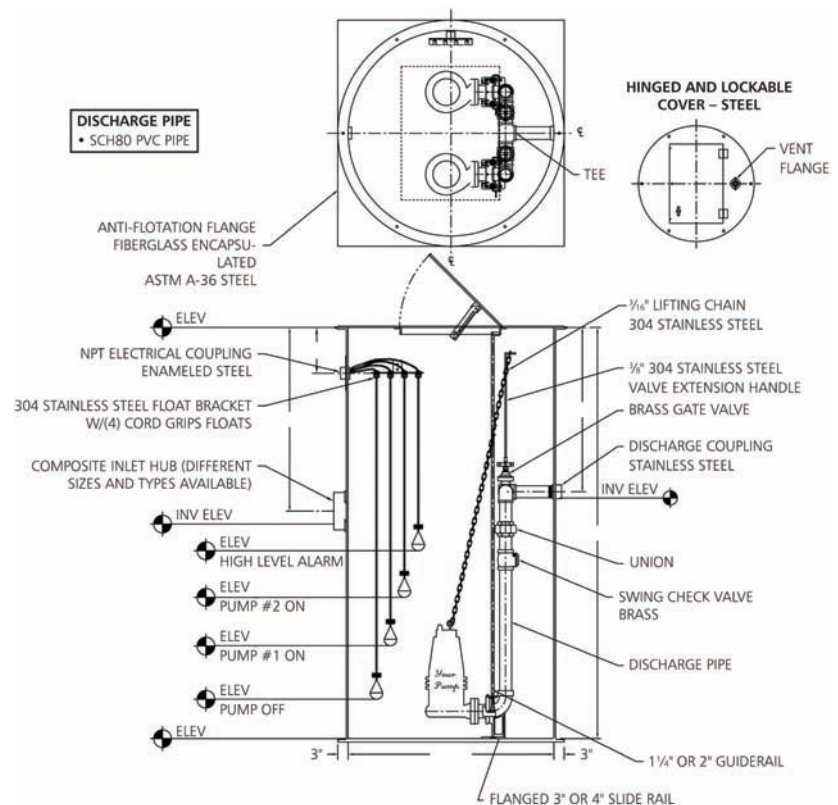
## Completely Assembled

Specially designed for the following uses:

- Sewage lift station - simplex and duplex.
- Anywhere waste or drainage must be disposed of quickly, quietly and efficiently.
- Waste drainage in new additions below sewer line.
- 1 1/4"-4" available.
- Valves and piping included.
- Easy pump installation.
- Solid cover on simplex.
- Hatch cover on duplex and large simplex.
- Disconnects and/or elbows included.
- Unassembled packages available.



## Sample of 3" Elbow System Basin Kit Dimensional



## Plumber Kits

- Ribbed polyethylene basin for strength and durability.
- Eight (8) bolt structural foam cover is strong and corrosion resistant.
- Vent grommets for both 2" and 3" vent provided.
- Inlet hub is a molded-in.
- Torque stop insert to stabilize the pump.
- Swing type 2" check valve.
- 2" PVC discharge pipe.



## Basin Specifications

Material	Ribbed Polyethylene
Usable Capacity	24.8 gal.
Dimensions	23" w x 30" h 18" w x 30" h
Inlet	4" slip fit hub for fast, easy connection
Shipping Weight	46 lbs.



# Basins and Accessories

## Fiberglass Basins and Accesories

### Standard features:

- Heavy duty fiberglass construction with 3/16" wall thickness.
- Standard sizes: 24" - 72" diameter, 36" - 96" deep.
- Larger sizes also available.
- Fiberglass anti-flotation collars are standard.

### Options:

- Mounting studs optional suffix - for slide rails available as custom. Must be ordered with basin.  
SMS = Simplex Studs.  
DMS = Duplex Studs.
- Filet bottom optional suffix = WB.  
Filet bottom prevents solids from building up on sides of basin.



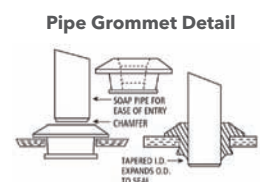
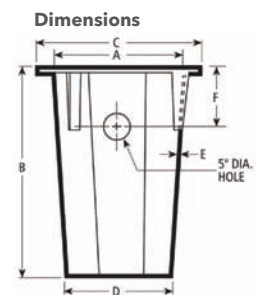
## Cover Options

Solid Fiberglass Cover	<ul style="list-style-type: none"> <li>• Heavy duty fiberglass construction</li> <li>• Construction provides corrosion resistant gas tight design</li> <li>• Unique flange connection allows superior sealing capability</li> </ul>	Solid Steel Cover	<ul style="list-style-type: none"> <li>• Heavy duty steel construction</li> <li>• Black epoxy coating is applied to each cover</li> <li>• Available in 24" through 48" diameters</li> </ul>
Single Door Hatch Cover	<ul style="list-style-type: none"> <li>• Heavy duty steel/aluminum construction</li> <li>• Black epoxy coating is applied to each cover</li> <li>• Single door design provides large opening for easy access to pump and controls</li> <li>• Available in 30" through 42" diameters.</li> </ul>	Double Door Hatch Cover	<ul style="list-style-type: none"> <li>• Heavy duty steel/aluminum construction</li> <li>• Black epoxy coating is applied to each cover</li> <li>• Double door design provides easy access to pump and controls</li> <li>• Available in 48" through 72" diameters</li> </ul>
Simplex Fiberglass Pump Cover	<ul style="list-style-type: none"> <li>• Heavy duty fiberglass construction</li> <li>• Construction provides corrosion resistant gas tight design</li> <li>• Unique flange connection allows superior sealing capability</li> <li>• Light weight for easy installation</li> <li>• Pump access and switch inspection plates furnished as standard</li> <li>• Available in 24" through 48" diameters</li> </ul>	Duplex Fiberglass Pump Cover	<ul style="list-style-type: none"> <li>• Heavy duty fiberglass construction</li> <li>• Construction provides corrosion resistant gas tight design</li> <li>• Unique flange connection allows superior sealing capability</li> <li>• Light weight for easy installation</li> <li>• Two pump access and one switch inspection plate furnished as standard</li> <li>• Available in 30" through 36" diameters</li> </ul>
Simplex Steel Pump Cover	<ul style="list-style-type: none"> <li>• Heavy duty steel construction</li> <li>• Black epoxy coating is applied to each cover</li> <li>• Pump access and switch inspection plates furnished as standard</li> <li>• Available in 24" through 48" diameters.</li> </ul>	Duplex Steel Pump Cover	<ul style="list-style-type: none"> <li>• Heavy duty steel construction</li> <li>• Black epoxy coating is applied to each cover</li> <li>• Two pump access and one switch inspection plate furnished as standard</li> <li>• Available in 24" through 48" diameters</li> </ul>



## Polyethylene Basins

- Suitable for residential and light commercial sump or sewage applications.
- Stacking ribs and tapered profile provide greater efficiency in shipping and storage.
- Made of non-corrosive, impact resistant, virgin polyethylene.
- Basins are available with structural foam, steel or poly covers, sealing tape, 2 inch discharge/vent pipe grommets, 4 inch inlet pipe grommet and 2 inch cord seal.
- All basins listed are provided with inlet hole drilled.
- Maximum fluid temperature: 130° F (54° C).

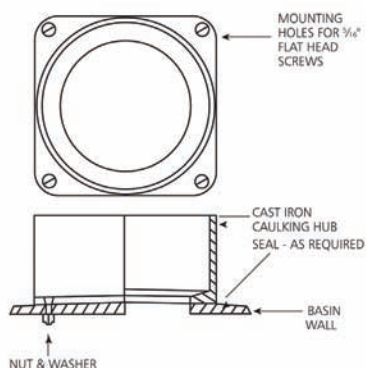


# Basins and Accessories

## Connections

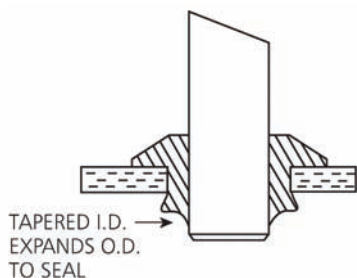
### Basin Specifications

Order No.	Pipe Size	Required Hole Dia.
A8-12U	1 1/4"	
A8-15U	1 1/2"	
A8-2U	2"	3"
A8-24U	2"	4"
A8-3U	3"	4"
A8-4U	4"	5"
A8-4DU	4" double seal	5"
A8-6U	6" seal	7"



### Inlet Caulking Hubs

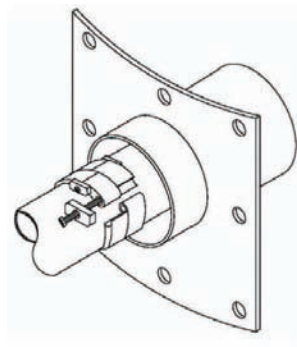
Order No.	Pipe Size
A8-2	2" cast iron
A8-3	3" cast iron
A8-4	4" cast iron
A8-6	6" cast iron
A8-8	8" cast iron



### Composite Inlet Hub

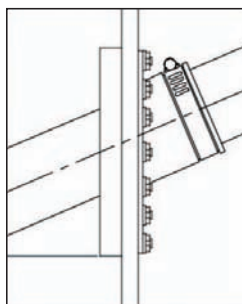
Order No.	Pipe Size	Required Hole Dia.
A8-4C	4"	Fits basic size
A8-6C	4"	Fits basic size
A8-6C2	4"	Fits basic size
A8-8C	4"	Fits basic size
A8-8C2	4"	Fits basic size

### Aluminum Sleeve and Link Seals\*



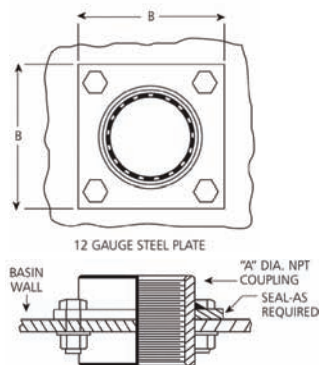
Part No.	Pipe Fit	Pipe Material
A8-46AS	6" Sleeve for 4" PVC	PVC
A8-610AS	10" Sleeve for 6" PVC	PVC
A8-812AS	12" Sleeve for 8" PVC	PVC
A8-48ASD	8" Sleeve for 4" DI	DI
A8-610ASD	10" Sleeve for 6" DI	DI
A8-812ASD	12" Sleeve for 8" DI	DI
A8-610SDR	10" Sleeve for 6" SDR	SDR
A8-812SDR	12" Sleeve for 8" SDR	SDR

\* Aluminum sleeve includes link seal appropriate for pipe size specified.



### Flexible Boot

Part No.	Pipe Size
A8-2FB	2
A8-3FB	3
A8-4FB	4
A8-6FB	6
A8-8FB	8



### Discharge Hubs

Through basin wall, female NPT coupling.

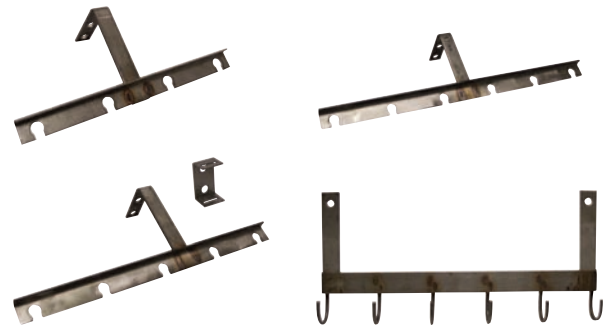
Model No.	A	B
A8-12	1 1/4"	4"
A8-15	1 1/2"	4"
A8-20	2"	4"
A8-30	3"	6"
A8-40	4"	6"



# Basins and Accessories

## Stainless Steel Float Brackets

- T-type brackets are designed to keep multiple float switches organized within the basin. All brackets are made of type 304 stainless steel and come with black cord snubbers to securely attach float cables.
- The T-shaped bracket styles are supplied with a mounting piece so that the bracket itself may be easily removed from the basin with the floats still attached.



## Portable Hoists

- 304SS construction .
- 30' of 1/4" stainless steel cable.
- Galvanized 1 ton hook.
- Dutton-Lainson marine grade brake winch.
- Adjustable reach in 1" (25 mm) increments.



## Trash Baskets

- Large solids pit for problem applications. Easily captures non-pumpable waste to be removed during routine maintenance.
- All aluminum construction.
- Perforated screening style.
- Baskets for up to 8" inlet.
- 2" diameter holes on 3" centers.
- Part # A8-TB1.
- Guide rails available upon request.



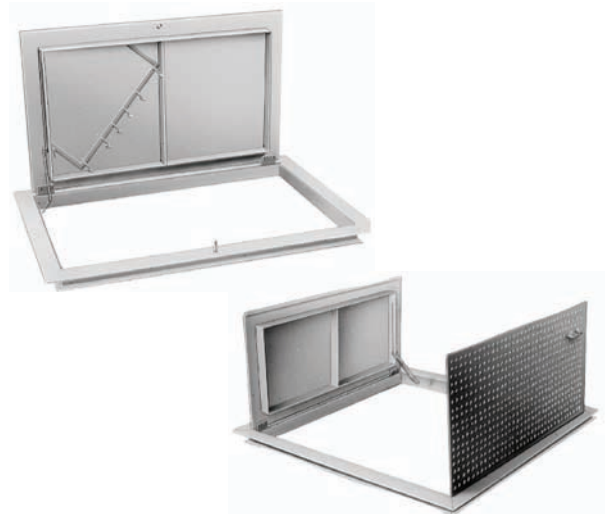
## Chains

Part No.	Description
ACHNSSL10	1/2" x 10'SS chain, 5/8 shackles
ACHNSSL20	1/2" x 20'SS chain, 5/8 shackles
ACHNSS10	3/16" x 10'SS chain, 5/16 shackles
ACHNSS10KT	10' chain kit/bail and shackles included
ACHNSS20	3/16" x 20'SS chain, 5/16 shackles
ACHNSS20KT	20' chain kit/bail and shackles included

Part No.	Description
ACHNSS30	3/16" x 30'SS chain, 5/16 shackles
ACBL10	3/16" x 10' cable 304 SS
ACBL20	3/16" x 20' cable 304 SS
ABAIL1	Bail for wgt of 1200#
ABAIL2	Bail for wgt of 2800#

## Access Doors

- All aluminum construction: Frames and doors are 1/4" thick, one-piece extruded construction. Concrete anchors are included.
- Heavy duty doors: Rated H-20 wheel rating.
- Stainless steel hardware: Hinges and all tamper-proof fasteners are 400 series stainless steel.
- Door panels: Diamond plate design, opens to 90° and locks automatically in that position. Stainless steel locking arm and release handle supplied as standard equipment.
- Additional features: Standard stainless steel handle, locking bar and snap-lock with removable key handle.
- Custom designs available.



# Guide Rails



## 1 1/4", 1 1/2", and 2"

### Complete Rails:

**A10-12 (1 1/4"), A10-2015 (1 1/2") and A10-20 (2")**

- Provide an easy means of removing pump from a wet-well by utilizing a quick disconnect and guide rail system.
- Connect directly to 1 1/4", 1 1/2" or 2" vertical discharge effluent, wastewater and grinder pumps.
- Adaptable to 1 1/4", 1 1/2" and 2" threaded horizontal discharge pumps by using a street elbow.
- Two piece 96" long fabricated SS rail assembly (2 easily coupled 48" long pieces for shipping convenience and ease of handling).
- Corrosion resistant design.

## 1 1/4" - 6"

### Guide Systems Less Rails

- Made by Conery
- Ductile iron construction.
- Powder coated for corrosion resistance.
- Compact design for greater space availability in the basin.
- Designed for simple installation and removal on most pumps.
- Units include a SS chain kit - see descriptions.
- Base units accept different size guide pipes (not supplied).
- Optional non-sparking available.
- Upper guide bracket included in all packages.
- Intermediate guide brackets available as an option .

### Standard Guide Rail Components

- SS guide rails, base, cross braces and pump brackets.
- SS lifting cable, 96" long x 3/16" cable.
- Brass quick disconnect with o-ring seal.
- Schedule 40 galvanized discharge pipe. Optional stainless steel pipe nipples are available (contact factory).
- Cast iron check valve with BUNA ball.
- SS tee handle for shut-off valve is supplied (it is for use with the optional discharge pipe assemblies).



## 3" and 4"

### Base Elbows Less Rails

#### 3" X 4" Rail System:

Connects to any pump with a 3", 150# ANSI flanged discharge. Outlet is a 4" flanged discharge.

#### 4" X 4" Rail System:

Connects to any pump with a 4", 150# ANSI flanged discharge. Outlet is a 4" flanged discharge.

#### 4" X 6" Rail System:

Connects to any pump with a 4", 150# ANSI flanged discharge.

### All Models:

- Cast iron construction for standard applications.
- Optional bronze pump adapter for applications requiring a non-sparking disconnect.
- Standard kit contains a base, a pump adapter with all required bolts and fittings, and the upper guide rail positioning bracket.

# Floats

## Pump and Panel Switches

### Terms to Know

**Pump Switches** are used to directly control the operation of a pump. They are normally wide-angle switches which means they operate over a range of approximately 70° to 90°. Pump switches are available with piggyback plugs and with bare leads. Some can also be used with control panels.

**Control Switches** are designed to only control pumps when used with a control or alarm panel. They cannot handle the high starting amps and running amperage of a pump, only signal or control amperage.

**NO or Normally Open** is a switch with contacts that are open in the hanging position. They are used to pump down or empty a tank.

**NC or Normally Closed** is a switch with contacts that are closed in the hanging position. They are used to pump up or fill a tank.

### A2T Series

#### SJE Double Float Master Pump Switch

- Mechanically activated, wide-angle switch designed to control pumps up to 13 FLA, 78 LRA, 120 VAC or 240 VAC.
- This switch consists of two mechanical floats and a splice tube. The splice tube contains a holding relay which eliminates pump chatter in turbulent conditions.

### A2HT Series

#### High Temperature Float Switch

- Temperature rating: 221° F (105° C)
- Wide angle switch: contacts open @ 45° below horizontal and close at 45° above horizontal.
- Ratings: 13 maximum amps, 1/2 HP, 115/230 V

### A2X Series

#### MilliAmpMaster Mechanical Float Switch

- Mechanically activated, snap-action, sealed gold cross-point contacts are designed to activate low current control panels and alarms.
- Narrow angle control for low voltage AC or DC applications.
- Electrical load - low current non-arcing applications.
- 125 VAC - maximum load .1 amps (minimum load .16 milliamps)
- 30 VDC - max. load .1 amps (minimum load .16 milliamps)
- 5 VDC - minimum load 1 milliamp
- Use with intrinsically safe barriers (as used with explosion-proof pumps), PLC's, solar applications and other low current control panel or alarm applications.

### A2D Series

#### SJE PumpMaster Pump Switch

- Mechanically activated, heavy duty contacts, wide angle operation.
- Controls pumps up to 1/2 HP at 120 VAC and 1 HP at 230 VAC.

### A2E Series

#### SJE PumpMaster Plus Pump Switch

- Controls pumps up to 3/4 HP at 120 VAC and 2 HP at 230 VAC.
- All other features are the same as A2D PumpMaster Series above.

### A2G Series

#### SJE AmpMaster Pump Switch

- Mechanically activated, heavy duty contacts, wide angle operation.
- Controls pumps up to 1 1/2 HP at 115 VAC and 3 HP at 250 VAC.
- Maximum pump running current of 20 amps.

### A2P Series

#### SJE MicroMaster Plus

- Mechanically activated, snap action contacts, wide angle.
- Controls pump up to 1 HP at 115 VAC and 1.5 HP at 230 VAC.

# Floats



## A2H Series

### SJE VerticalMaster Pump Switch

- Mechanically activated vertical operation
- Controls pumps up to 1/2 HP at 120 VAC and 1 HP at 230 VAC

## A2S Series

### CentiPro Diaphragm Pump or Control Switch

- Mechanical contacts
- Cast iron housing and BUNA-N diaphragm

## A2J Series

### SJE VerticalMaster II Pump Switch

- Mechanically activated vertical operation
- Maximum running 10 amps

## A2N Series

### SJE SignalMaster Control Switch

- Mechanically activated, narrow angle, designed to activate pump control panels or alarms
- Control differential: 1.5" above or below horizontal



## ASWT SJ Electro Weight

- Adjustable snap in design
- Works with all float switches shown
- PVC



## A2WTC Conery Weight

- Zinc plated cord weight
- Works with all float switches

# Float Accessories

## Junction Boxes

- NEMA 4X fiberglass enclosure.
- Cord grips supplied for pump and control wires.
- 2" conduit connection supplied.
- Consult factory for enclosure types and options not listed.
- Part No. A8-1J - includes cord grips
- Other configurations available



# Fittings

## Check Valves/Fittings

Cast iron/plastic check valves/short radius elbows for effluent and sewage applications.



### Plastic Check Valves

- Ideal for horizontal installation.
- Compression seal connection for easy installation.
- Swing design flapper prevents clogging.
- Available for pipe size 1 1/4", 1 1/2", 2" and 3".
- 200 PSI burst rating.

Order No.	Pipe Size
A9-12P	1 1/4"
A9-15P	1 1/2"
A9-2P	2"
A9-3P	3"

### Ball Check Valves

- Ideal for vertical mounting.
- Heavy duty cast iron or plastic construction.
- Natural rubber ball.
- Clean out port and plug.
- Available in 1 1/4", 1 1/2", 2" and 3" NPT threaded connections.
- Also available in 4" flanged (125#).
- Recommended for flow velocity of 3' to 5' per second.
- Horizontal installation requires a 20' static head.



### Rubber Flapper Style Check Valve

- Swing design flapper.

Order No.	Pipe Size
A9-2PH	2" NPT



### Pipe Connections

#### Short Radius Elbow

- Cast iron construction.
- 125 lb. ANSI rated flange at pump end.
- 3" NPT or 4" NPT threaded connection for discharge pipe.
- Available in 1 1/4", 1 1/2", 2" and 3" NPT threaded connections.
- Also available in 4" flanged (125#).
- Recommended for flow velocity of 3' to 5' per second.
- Horizontal installation requires a 20' static head.

Order No.	Flange Size	Used With
A1-5	3"	3", 125# ANSI flange
A1-6	4"	4", 125# ANSI flange



# Oil Smart

## Elevator Sump Kit

### Oil Smart Switch

- Solid state sensing device that differentiates between oil and water.
- Two sense points, "pump on" and "pump off", reduces the risk of pumping oil or other hydrocarbons into the environment.
- Completely encapsulated and water-tight.
- CE, UL 508, UL Marine and CUL Listings.
- Part number A1SEEWATER.
- Part number A1SEEWATER/P (with plug style).
- Part number A1SEEWATER1 includes A1SEEWATER Oil Smart Switch and A4SEE1 Oil Smart Alarm.

### Simplex Single Phase Panel

- Simplex, 115 or 230 volt, 1Ø panel, up to 20 amps, in rugged NEMA 4X fiberglass enclosure with locking hasp and hinged door. Up to 1 HP.
- Use with our model A1SEEWATER Oil Smart sensor to control a sump/effluent pump in areas where oil may be present.
- The sensor differentiates between oil and water. The panel and sensor will not allow the pump to operate unless water is present, eliminating environmental contamination and costly oil cleanups.
- Switch included (A1SEEWATER) and Includes Liquid Smart alarm sensor.
- Part number A1SEE1.

### Duplex Single Phase Panel

- 1Ø panel, 115 / 208 / 230 volt.
- Two 20 amp motor start relays.
- Operates pumps: up to 3/4 HP at 120V up to 2 HP at 230V.
- Includes Liquid Smart® alarm sensor.
- Seal fail fault and high temperature.
- Alternation, 2-pump high demand, pump no load lockout.
- NEMA 4X enclosure.
- All switches included.
- Part number D1SEE20.

### Oil Smart® Alarm

- Alarm leak or liquid detection.
- 120V.
- Includes Liquid Smart® sensor.
- Sensor differentiates between oil and water.
- Alarm indication differentiates liquid.
- Dry contacts.
- Part number A4SEE-1.

### Simplex Single Phase Panel Oil Removal

- The sensor differentiates between oil and water. The panel will allow oil to be pumped while sending alarm.
- Part number A1SEE2.

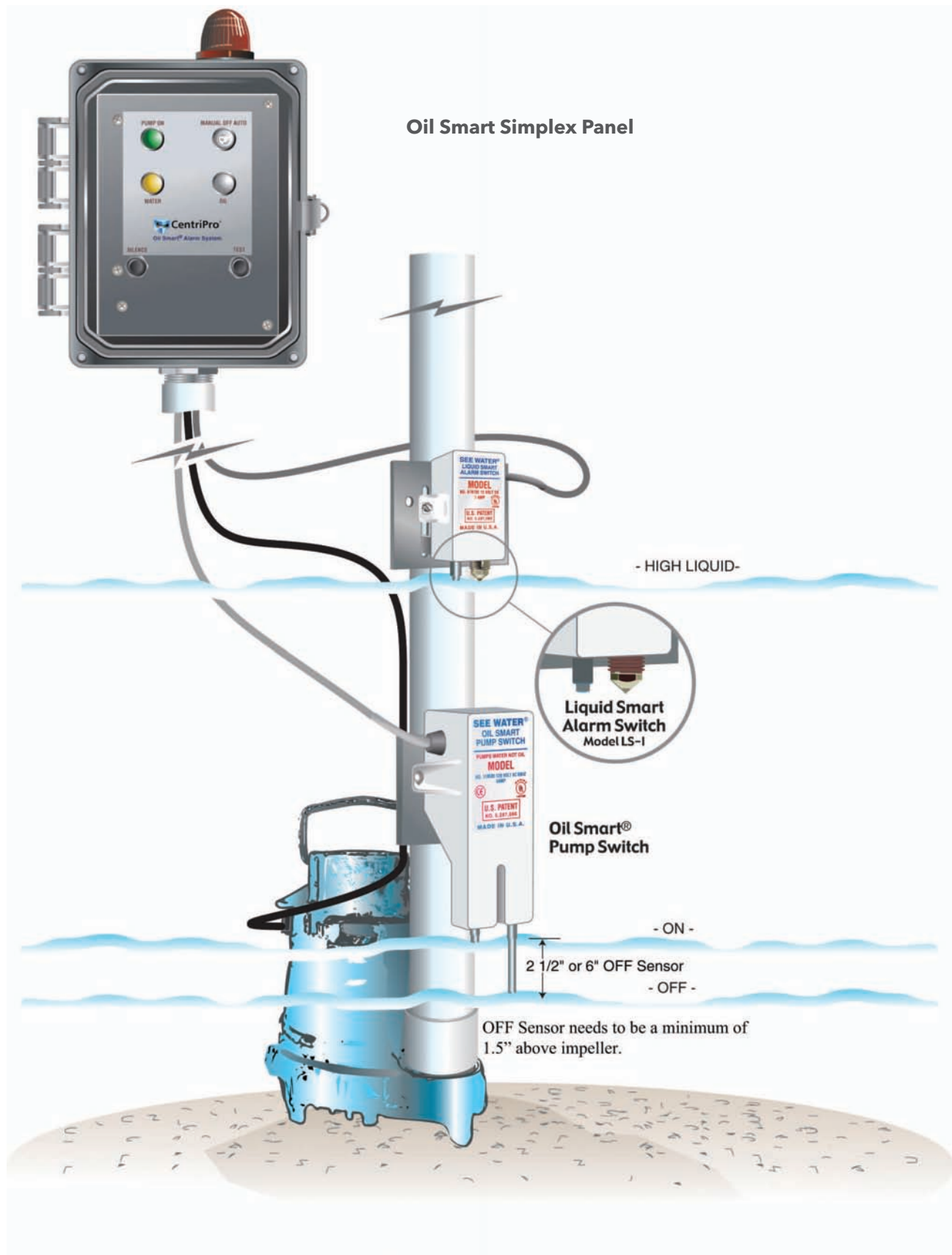
### Simplex Three Phase Panel

- Simplex, 3Ø panel in rugged NEMA 4X fiberglass enclosure with locking hasp.
- Part Number - 480V = A3SEE1 - 208-230V = A3SEE3

### Simplex Three Phase Panel Oil Removal

- The sensor differentiates between oil and water. The panel will allow oil to be pumped while sending alarm signal.
- Part number - 480V = A3SEE2 - 208-230V = A3SEE4

# Pump Installation



# Xylem |'zīləm|

- 1) The tissue in plants that brings water upward from the roots;
- 2) a leading global water technology company.

We're 12,000 people unified in a common purpose: creating innovative solutions to meet our world's water needs. Developing new technologies that will improve the way water is used, conserved, and re-used in the future is central to our work. We move, treat, analyze, and return water to the environment, and we help people use water efficiently, in their homes, buildings, factories and farms. In more than 150 countries, we have strong, long-standing relationships with customers who know us for our powerful combination of leading product brands and applications expertise, backed by a legacy of innovation.

**For more information on how Xylem can help you,  
go to [www.xyleminc.com/brands/centripro](http://www.xyleminc.com/brands/centripro)**



Xylem Inc.  
2881 East Bayard Street  
Seneca Falls, NY 13148  
Phone: 866-672-3669  
Fax: 888-322-5877  
[www.xyleminc.com/brands/centripro](http://www.xyleminc.com/brands/centripro)

CentriPro is a trademark of Xylem Inc. or one of its subsidiaries.  
© 2011 Xylem Inc. BRCPWWA November 2011